



La Palabra

The newsletter of the League of Women Voters of New Mexico

VOL. 58 NO. 4 SPRING 2011

League Contacts

LWVNM

2315 San Pedro NE, (#F-6)
Albuquerque, NM 87110
505-884-8441
lwvnm.org
Katherine Campbell,
President
505-662-3913

Central New Mexico

2315 San Pedro NE, (#F-6)
Albuquerque, NM 87110
505-884-8441
lwcnm.org
Jan and Olin Bray
Co-Presidents

Greater Las Cruces

575-524-8683
lwvglc.org
Bonnie Burn, President

Los Alamos

505-670-7046
lwvlosalamos.org
Barbara Calef, President

Santa Fe County

1472 St. Francis Drive
Santa Fe, NM 87505
505-982-9766
lwvsfc.org
Meredith Machen, President

La Palabra Editor

Bonnie Burn
575-526-0013

The League of Women Voters of New Mexico, a nonpartisan political organization, encourages informed and active participation in government, works to increase understanding of major public policy issues, and influences public policy through education and advocacy.

Call to State Convention - 2011

May 13-15, 2011 - Los Alamos, NM

Hosted by the League of Women Voters of Los Alamos

Holiday Inn Express, 60 Entrada Drive

SCHEDULE

Friday, May 13

6:00 - 8:00 p.m.

Reception at home of Kyle and Mike Wheeler
1855 Los Pueblos
Carpools will form in the lobby of the Holiday Inn Express starting at 5:30 p.m.

Saturday, May 14

8:00 a.m.

Registration. Silent auction begins.

8:30 a.m.

Convention 2011 Convenes
First Plenary Session

Noon

Lunch
Speakers: Mary Wilson, Redistricting and
The League of Women Voters

1:30 p.m.

Workshop: "Deliberative Democracy"
(Presentation by Dick Mason followed by
discussion)

3:15 p.m.

Tour of Los Alamos (or sightseeing on your own)

5:30 p.m.

No-host bar at Best Western Hilltop House,
400 Trinity Drive

6:30 p.m.

Banquet
Best Western Hilltop House, 400 Trinity Dr.
Speaker: NM Senator Tim Keller on Building
Healthy Communities

Sunday, May 15

8:30 a.m.

Second Plenary Session

10:30 a.m.

Silent auction ends

Noon

Convention 2011 adjourns

Registration Form and additional information is on pages 14 and 15

--► Please bring this issue of *La Palabra* with you to the Convention.

PRESIDENT'S MESSAGE - Q&A

Q: What is the purpose of LWVNM?

A: Primarily, in my view, the purpose of the state League is to advocate for our positions at the state level. The League of Women Voters, as you know, advocates only after study and consensus have produced positions on which to base its advocacy. For the purposes of advocating at the state level, this means study and consensus at the state (or broader, i.e., national) level; in general we cannot use positions developed at the local level to advocate at the state level. The only exception is advocacy on a local issue which for some reason will be decided by a state agency. An example might be the establishment of a Metropolitan Court in Doña Ana County on which LWVGLC has developed a position.

At least half of the positions on the state board are directly related to this primary purpose. The action committee co-chairs coordinate legislative lobbying. The various program chairs (Election Issues, Education, Health Care, Natural Resources, etc.) coordinate advocacy, study and position development and review in their various areas. And the Communications committee puts our message out to the public as well as our members.

Q: So who needs a president?

Good question, seeing as how the action, program and communications committees fulfill the main purpose of the state board.

The president and vice-president of LWVNM have two functions:

1. An administrative function: to maintain infrastructure that enables the advocacy function to do its work. A number of positions, from secretary to technical support, contribute to this work.
2. A ceremonial function: to represent the League when a single individual is needed for that purpose. Again, a number of other board positions, drawn more from the advocacy side discussed above, support this function.

Now—again in my view—these two functions correspond to two rather different personality types, which is one reason two people are needed on this leadership team, although how they decide to split the various tasks may differ from my 1 and 2 above. I consider that I have been quite good at the administrative function in my four years as president. But I also have been very happy not to repeat my only TV appearance and my only formal address to an outside organization, both of which occurred during the first year of my first term. I like to write (although I have missed being able to write a good polemical rant!), but I also have shamelessly subscribed my name to numerous letters and other communications written by other members of the board.

The Big Q: Who is going to step up to the plate?

The nominating committee has put together a dynamic support team (p. 11). But as of this writing, no one has agreed to be part of the co-presidency. Given the superb slate this should be an entirely doable job. I provide a job description on p. 11. If you see a match (and remember, only a partial match is needed!) to your own talents or those of a friend, contact the nominating committee at [nominations\(at\)lwvnm.org](mailto:nominations(at)lwvnm.org). If you ever want to work with an awesome group of women and men, this is your opportunity.

Kathy Campbell, President

LOCAL LEAGUE NEWS FROM THE PRESIDENTS

Central New Mexico - *Jan and Olin Bray*

We had a lovely time at the League's Birthday Party at the Adobe Theater. The show was a fun mystery and the cake and food organized by Terry Quinn were great. We made over \$400 for the operating fund, too!

We participated in the latest Naturalization Ceremony, and Gayle Prinkey and Jan registered over 100 new citizens as voters. It was a moving and amazing experience.

Dee Watkins and Eileen Longworth presented a 90 minute workshop on developing personal advocacy skills for the state conference of the National Association of Social Workers to rave reviews. The League had a display table for three days. Andrea Targhetta, Dee Watkins, and Jan Bray passed out many copies of the *Voters' Key*, *Who's Who* and membership forms for state member-at-large and all four state Leagues. We educated many attendees on the study and advocacy activities of League. Many people said, "I didn't know you did that. That's interesting." We also passed out much information on pain control and drug policy. There were over 700 attendees at the conference, so it was great exposure for League.

LWVCNM will present our alcohol policy study to the state League board at its March meeting. The Drug Policy Committee has been working diligently and has developed study questions and consensus questions as well as many research resources. The next step after the Board recommendation is the State Convention. Keep the second weekend in May open for State Convention in Los Alamos. LWVCNM pays registration fees for all delegates. There also will be workshops on League topics.

Greater Las Cruces - *Bonnie Burn*

The League's two studies, Affordable Housing and Education, are progressing well. At annual meeting each committee is

asking for a year's extension because of the complexity of the issues and the work that still remains to be done.

In January, the League moderated a community forum on immigration that pulled together community organizations that advocate for and provide services to immigrants. The discussion included legal aspects, economics, ethics, and beliefs vs. myths about immigration. It was held in City Hall and televised. About 175 people attend the afternoon and evening sessions.

During February, the League was invited to observe immigrant detainee hearings in the U.S. District Court-New Mexico District. We were able to see the process from charge through sentencing. The U.S. Magistrate Judges talked with us afterwards about the impact that a law-enforcement-only approach is having on the detainees and the court.

Redistricting efforts are underway in the City of Las Cruces and Doña Ana County. Redistricting will be pursued by citizen's committees in each area, and some League members will serve as members.

In other activity, League members visited the Friedman Recycling Center located in El Paso. Friedman is the contractor who is collecting recyclable material in Doña Ana County and the City of Las Cruces. We also participated in celebrating March as Women's History Month through a poster display, 150 years of Women's History, and showing a movie, "Not for Ourselves Alone," a story of Elizabeth Cady Stanton and Susan B. Anthony in the Brangian Library. I made two presentations, "The Women's Suffrage Movement Morphs Into the League of Women Voters," to students in a graduate program of NMSU's Health and Social Services program.

Los Alamos - *Barbara Calef*

The election season extended into the new year with a ballot for the school board and

(Continued on page 4)

Local League News *(Continued from page 3)*

the UNM-LA Advisory Board. The League's candidates' forum gave the voters an opportunity to comprehend the difficult task that lies ahead for both organizations as they attempt to maintain high standards with diminishing income in the public school system and the college. Meanwhile, a special election was averted when the County Council decided to settle a lawsuit challenging its earlier acceptance of a poorly-worded referendum petition, asking that citizens vote on the site and specifications for a new Municipal Building.

Lunch with a Leader brought members and guests together with County Councilor Ralph Phelps during his last month in office (December) and introduced Steve Watts, the General Manager of the new Los Alamos Cooperative Market (January). February's program returned to the topic of school funding with a discussion with Gene Schmitt, LAPS Superintendent. March's Lunch with a Leader was hosted by Magistrate Judge Pat Casados and included a tour of the County's new Justice Center.

Los Alamos County is searching for a new County Administrator, but the search is complicated by the possibility that the voters may soon be asked to amend the County Charter to add a mayor to the governing body.

Santa Fe County - Meredith Machen

The League is known for its commitment to getting out information to voters, and this spring the Santa Fe chapter ventured into new territory by raising awareness of campaign ethics and finance. In addition to producing a *Voters' Guide* with the traditional questions for candidates and their responses, we decided to "follow the money" in the local school board election. Posting campaign contributions on our website quintupled the number of "hits," and this traffic seems to have lead to an increase in voter turnout and engagement.

Our information directory of government officials, *Who's Who in Santa Fe County*, is being widely distributed in order to engage more citizens in government and community action.

Our study of mail ballots has been most informative. Our County Elections Director has helped us understand the issues and benefits, which include improving voter roll accuracy and turnout. The study will continue next year.

LWVSFC has been engaging in strategic planning so that we can maximize our potential and address our challenges. Thanks to Linda Moscarella, vice president, LWVNM, for facilitating several of our sessions. When we complete the goals, objectives, timelines, and identification of human and financial resources, we'll have a good roadmap for the next five years. Clearly we need more members to serve on active committees if we are to achieve our goals. Monitoring local government meetings and working on priorities, including city and county ethics, transparency, education, health care, natural resources sustainability, affordable housing, social policy, and community engagement takes quality time, focus, and commitment.

On March 30, we are holding an open meeting on redistricting and apportionment with Mary Wilson, immediate past president of LWVUS, and officials from Santa Fe city and county governments.

After more than a year of research and planning, LWVSFC's History Project is close to completion. With the services of a professional videographer, we now have a fifteen-minute DVD full of reflections on actions, accomplishments, challenges, and memories of our past 60 years. A major celebration and the film debut will be held at the National Park Service Headquarters on September 24.



REPORTS TO CONVENTION

News on National Studies From LWVUS

*Peggy Hill, Director, LWVUS, and
Liaison to New Mexico)*

League of Women Voters of the United States voted at the June 2010 convention to conduct two studies within the next two years: "The role of the Federal Government in Public Education" and "Privatization." In April, LWVUS will be holding a webinar for League leaders on the fundamentals of doing a national League study. The timeline for local Leagues for each study are as follows: Education Study (May through November), Privatization (December through April). The Education study will cover three areas: history, common core state standards, and equity and funding involving Pre K through grade 12. Materials and the consensus questions for the Education Study will be posted on the LWVUS website in April. It is hoped that both studies will be completed by the 2012 Convention, June 8-12, to be held in Washington D.C.

Board Highlights

Jennice Fishburn, Secretary

The LWVNM Board has met on January 8 and March 19, 2011.

Actions at the January meeting included:

- 1) Adopting two priorities for this state legislative session: implementing the federal health reform (including a health care exchange) and state budget/revenue issues;
- 2) Recommending that a priority for LWVUS is to spread the word about what our taxes pay for, including how Social Security and Medicare work; and
- 3) Hearing reports from our LWVUS Board liaison, Peggy Hill, and from Diane Goldfarb, who represented LWVNM on a task force convened by the Middle Rio Grande Conservancy District per request of Senate Memorial 21.

The March board meeting primarily focused on preparations for the LWVNM May Convention, including reviewing and recommending program for study and action proposals as well as the proposed 2011-2012 and 2012-2013 budget, and hearing the report of the Nominating Committee. In addition, the Board approved a new policy on candidates' forums, with thanks expressed to Barbara Calef (LWVLA), Bonnie Burn and Erika Graf-Webster (LWVGLC) for their work in drafting the policy.

LWVNM Legislation in the 2011 Session

Dick Mason, Co-Chair

The LWVNM Action Committee met weekly, by phone, from early January through the end of the session. Working with other groups, we had a moderately successful legislative session.

We had some success in our two priority areas. Implementing federal health care reform was one priority, and we were able to pass **SB38** (Feldman/Munoz) New Mexico Health Insurance Exchange Act; **SB208** (Feldman/Papen) Health Insurance Rate Increase Review; and **SJM1** (Feldman/Picraux) Continue Health Care Reform Working Group.

LWVNM's second priority was advocating for revenue bills to avoid cuts in vital services. Although none of the revenue bills that we supported passed, the legislature did pass **SB47** (Keller) and **HB161** (Eleanor Chavez), both of which will require the state to develop a Tax Expenditure Budget/Report. This will provide information for advocates to lobby for the repeal of certain tax credits in the future. In addition, **HB166** (Sandoval) Review Certain Tax Credits lists specific tax credits that must be reviewed at six year intervals beginning in 2014.

(Continued on page 6)

Legislative Session *(Continued from page 5)*

In the area of voting and elections, **SB337** (Morales/James) Precinct Consolidation for Certain Elections and **SB403** (Lopez) Election Code Standardization passed. **SB 337** will allow counties to establish “vote centers” consolidating up to ten precincts. A voter will be able vote at any vote center in his county, providing more flexibility in where to vote and cutting down on the number of provisional ballots. In addition, county clerks will be able to assign election administration staff to every polling place. Unfortunately, several attempts to increase the disclosure of sources of independent campaign expenditures failed.

In the area of education two LWVNM bills passed. **HB120** (Sapien/King) Early Childhood Care & Education Act creates a comprehensive system of early childhood services. **SB304** (Nava) creates a Full Service Community Schools Fund to make grants for community school programs.

Again working with other groups, we were able to block legislation that would have required voter ID, reinstated the death penalty, infringed on a woman’s right to choose, undermined environmental standards and regulation, and eliminated driver’s licenses for undocumented residents.

As of March 20th, the Governor had not signed or vetoed any of the above legislation.

Natural Resources

Lora Lucero, Director

In February, the LWVNM, collaborating with our Colorado League friends, urged the Environmental Protection Agency (EPA) to implement measures under the Clean Air Act to improve the San Juan Generating Station. The Four Corners region would benefit from greater coordination, cooperation and communication among the three distant EPA offices. The LWVNM encouraged the EPA to establish a senior level position, who would work with all three regional EPA Air Division

Directors and all other jurisdictions in the Four Corners to oversee a consistent proactive approach to the Four Corners’ air and water quality issues.

The LWVNM continues to play an important role in defending the new greenhouse gas regulations adopted by the New Mexico Environmental Improvement Board (EIB) in December 2010. The regulations have been appealed to the New Mexico Court of Appeals. LWVNM is considering submission of an *amicus curiae* brief in support of the regulations.

Representing the League, I spoke at the Integrating Land Use and Water Planning Conference in Albuquerque on April 8, sponsored by University of New Mexico (UNM) Utton Transboundary Center. My talk focused on the current disconnects between land use and water planning and regulations, and I proposed a new planned growth paradigm.

Barbara Calef (Los Alamos), Judy Williams (Santa Fe County) and I reviewed the Natural Resources position with an eye towards initiating a study to revise and update portions of the position. The LWVNM Board will be recommending the study to the Convention in May. There are members identified from local Leagues who have expressed an interest in helping with this update last summer. We hope they will be available to assist and carry this study forward in 2011-2012.

On March 17, LWVUS President MacNamara sent a letter to the House of Representatives urging them to oppose H.R. 910, which passed the Energy and Commerce Committee on March 15. This legislation guts the Clean Air Act and prevents EPA from regulating greenhouse gases. Please call your Congressman right away and urge him to oppose H.R. 910.

April 22 is Earth Day. Please share this Hopi Prayer for the Japanese and the Planet.

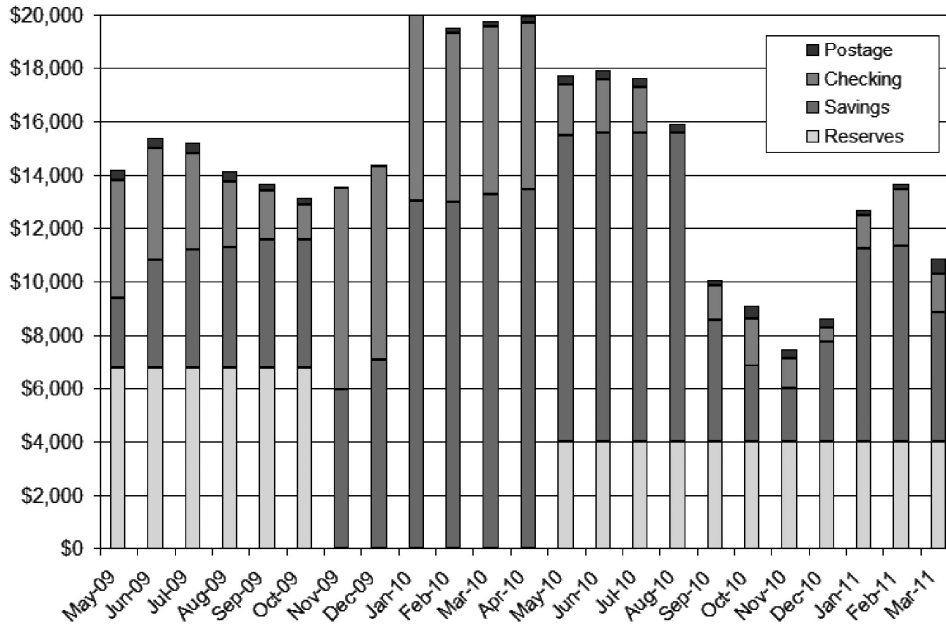
<http://www.youtube.com/watch?v=g4Qub4VL6w>

Treasurer's Report

Cheryl Haaker, Treasurer

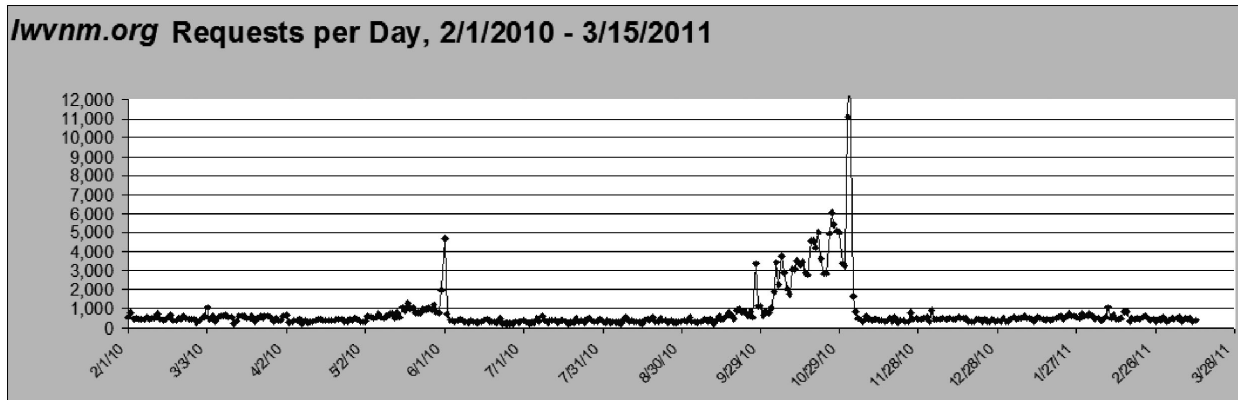
The graph shows the total assets of the LWVNM Operating Fund, month-by-month since the last Convention in 2009. Assets are broken down into these categories: Reserves (the Certificate of Deposit), the Savings account, the Checking account, and the USPS postage account which is used for bulk mailings.

Total LWVNM assets



Web Report

Total page requests per day since Feb 1, 2010 are graphed. It's clear that the public knew where to go for election information - note the significant spike for the June 2010 Primary and the month-long ramp up to the Fall General Election.



Membership Report

Membership in the League of Women Voters of New Mexico has remained approximately constant over the past two years, between 600 and 620 members. As of mid-March, 2011, we had 607 members.

Until the beginning of 2011, an additional 50+ "national" members were included as part of LWVNM. However, the national board has decided to remove those national-only members from our figures. LWVUS also no longer sends \$5 per national member to the corresponding local League to provide some services (mostly local and state newsletters) to those members.

Thanks to all the local membership chairs for keeping the national database up to date, clearing inactive members and promptly adding new members. LWVNM now depends on a clean national database to generate labels for *La Palabra*, as well as for

the purposes of assessing per-member-payments and determining the number of convention delegates to which each League is entitled.

Voters Key - Kathy Campbell, Editor

The 2011 Voters Key was prepared, and 7000 copies were printed in early February. More than half of these were mailed to public libraries in areas outside the four cities where there are local Leagues. Copies were also distributed at League Day at the Legislature.

Local Leagues are welcome to as many copies as they can use. They are also available for other non profit organizations and public meetings. Please contact your local League if you are attending an event where you would like to make them available, or if you know of another organization that would like to distribute them.



**Our Leader,
Kathy Campbell**

League of Women Voter of New Mexico Hard at Work—2009-2011



Board meeting in Albuquerque

Strategic Plan - Linda Moscarella



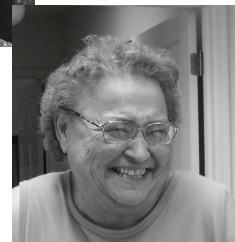
**Lora Lucero - Climate
Change Symposium**



Editor



**Meredith Machen
Testifying at EIB**



**In Memoriam
JoAnne Ramponi**

2011 CONVENTION BUSINESS

PROPOSED PROGRAM FOR STUDY AND ACTION (2011-2013)

The LWVNM Board of Directors voted to recommend three proposed studies to Convention 2011. The Board evaluates study proposals according to three criteria:

1. availability of interested League members to work on the study (preferably from more than one local League),
2. whether the issue is one that can be addressed by governmental action (as opposed to private action), and
3. whether the issue is one in which the League is likely to make a difference.

Convention will continue the discussion, and may use additional criteria in its final decision

Recommended Items

Proposal for State League Study of the Public Regulatory Commission (PRC)

The Santa Fe League of Women Voters proposes a study of the New Mexico Public Regulation Commission (PRC) that regulates utilities, insurance, telecommunications, and transportation, and also includes the State Fire Marshall Division and the Corporations Bureau. The study would primarily focus on the organization and regulatory functions of the PRC.

The PRC's regulatory oversight affects all New Mexicans, but these functions have been poorly performed, and the agency has been plagued by scandals, both functional and personal. Problems with the PRC include lack of adequate funding, the political power of the regulated industries, lack of aggressive consumer protection, political interference from the legislature, commissioners who lack adequate preparation for their jobs, and the gerrymandering of PRC districts, as well as the personal and legal problems of several individual PRC members that have hampered the functioning of the agency.

The fact that the PRC is ripe for reform, coupled with the fact that there are many other models around the country of state regulatory agencies, make it a perfect

subject for a LWVNM study. The LWVNM could recommend a model that would best meet the stated goals of the PRC: independence, impartiality, and consumer protection.

Natural Resources Update: Land Use

An informal committee composed of members of several NM Leagues has been reviewing the LWVNM Natural Resources position. Twelve areas have been found to be in need of updating.

The League of Women Voters of Los Alamos proposes that updating this position should begin with a study of land use. Issues that would be considered under land use would be the appropriate balance between human needs and economic development vs. the preservation of intact ecosystems, open space and wetlands, facility siting, and transportation. The financing of development and the interaction between local land use policies and state statutes are additional topics to be considered.

Two of the NM Leagues (LWVGLC and LWVCNM) have local land use positions that are frequently used. LWVSFC is consolidating scattered positions related to

(Continued on page 10)

Program for Study and Action

(Continued from page 9)

land use, having recently used them to review and comment on the new Santa Fe County Sustainable Growth Plan. LWVLA is planning a study of land use and transportation/infrastructure planning.

It is clear that this is an area of increasing importance, dealt with only tangentially by existing LWVNM positions. There are individuals from all four local Leagues who are interested in contributing to this study.

Proposal to Study Alcohol

The study will seek the best ways to reduce alcohol-related deaths and damage in New Mexico.

Alcohol is a legal drug. It has a long history of regulation. New Mexico policy changes have reduced alcohol-related deaths by intoxicated drivers. Alcohol-related damage is not confined to the highway. Alcohol-related damage ranges from fetal alcohol syndrome, chronic liver disease to binge drinking and more. A study of the best ways to reduce alcohol-related death and damage is proposed. There is a need to examine the effectiveness and barriers to state policy changes and consider priorities for effective legislative action. This would be a two year study. Questions to guide the study have been developed. The first year would be to do research and educate members and the community. The second year would be for consensus. Dee Watkins and the CNM Drug Policy Study Committee would lead this study.

Non-Recommended Items

None

Concurrence Adoption of Transparency Position

Jody Larson, Santa Fe County

After studying New Mexico statutes as well as national and international sources on this topic, the LWVSFC adopted a transparency position in 2010. LWVNM Council directed us to see if it might be appropriate for a state-level position, using the League's concurrence process. This would mean any modifications would need to be very minimal. After consulting with NM Foundation for Open Government, we eliminated one section (on elections) and made state applicability explicit. The full position proposed for concurrence adoption will be available as a handout in the Convention packet and is now available at lwnm.org. In the interim, we offer these arguments for concurrence:

Pros: This transparency position could focus our attention on this issue and on the NM statutes addressing open meetings and inspection of public records in particular. If a state agency failed to provide a public record within the specified time frame or transacted public business in a meeting that was not properly noticed, a transparency position that specifically addresses the NM Open Meetings Act and Inspection of Public Records Act could prove useful, particularly concerning executive branch regulatory bodies. It might help us to keep the pressure on the legislature regarding open meetings and providing meeting materials to the public. In addition, such a position might serve as a teaching tool: adopting and announcing such a position could give a heads-up to executive branch agencies that LWVNM intends to be active in this area.

Cons: LWVUS and LWVNM already have many positions that include the concept of transparency. They may refer to it in other terms, such as openness or inclusion, but many national and state positions demand that governments hold open meetings and provide official documents. They also encourage governments to go beyond the letter of the law in conducting public business in public.

Again, the proposed position is available at lwnm.org, and it will be included in the convention packets for delegates.

Nominating Committee Report

Below is the slate of nominees for elected office (officers plus up to six members of the board of directors will be elected by delegates at the convention). Also, included is a list of individuals who have agreed to fill a large number of equally necessary off-board positions. Thank you to 2011 Nominating Committee for their heroic efforts at what is clearly the most difficult job in our League:

Chair: Rebecca Shankland (Los Alamos)
Elected Member: Johnnie Aldrich (Greater Last Cruces)
Elected Member: Andrea Targhetta (Central New Mexico,
who replaced JoAnne Ramponi, the third member elected in 2009)
Board Appointee: Meredith Machen (Santa Fe County)
Board Appointee: Lora Lucero (Central New Mexico)

OFFICERS

President Open
Vice President Open
Secretary Chris Burroughs (CNM)
Treasurer Cheryl Haaker (CNM)

Directors

Legislative Action co-chair
Dick Mason (CNM)

Communications: Joe Keefe (CNM)
Education: Meredith Machen (SFC)
La Palabra Editor: Mona Blaber (SFC)
Membership: Lynn Jones (LA)
Natural Resources co-chair
Lora Lucero (CNM)

Nominating Committee

Chair: Mary Wilson
Elected Member: Rebecca Shankland
Elected Member: Andrea Targhetta

OFF BOARD COMMITTEE CHAIRS AND CO-CHAIRS

Legislative Action co-chair:
Barbara Calef (LA)

Drug Policy chair:
Dolores (Dee) Watkins (CNM)

Election Issues: Open

Health Care co-chairs
Lydia Pendley (SFC) and
Leah Ingraham (CNM)

Immigration: Meredith Machen (SFC)
Membership Outreach to MALs and New
Leagues: Mary Wilson (CNM)

Natural Resources co-chair
Judy Williams (SFC)

Other Positions for 2011-13

Archivist/Historian
Barbara Goedecke (GLC)

Communication Technical Support
Cheryl Haaker (CNM), Web Master

Voters' Guide Editor (needed in 2012):
Meredith Machen (SFC)

Voters Key editor (needed in 2012)
Kathy Campbell (LA)

As you can see, in addition to the lack of a president or vice president, we also still need a chair for the critical area of Election Issues.

Co-Presidents Job Description

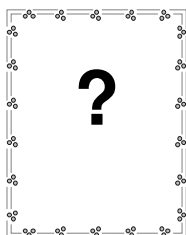
- Listen to team (listed above)
- Compile calendars and agendas for meeting with team and chair meetings

(Continued on page 12)

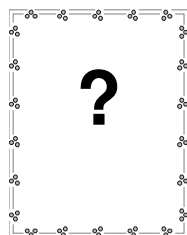
Co-Presidents Job Description

(Continued from page 11)

- Listen to team
- Approve or (rarely) edit or (occasionally) sign what team members prepare in the way of publicity, letters, testimony, newsletter contributions, etc.
- Listen to team
- Identify areas where team energies need a little more coordination, focus, or direction
- Listen to team
- Prepare an occasional League letter or op-ed, meet with editorial boards, and meet with federal or state office holders or their staffs, always with plenty of help from team
- Listen to team
- Other incidental tasks, most of which can be delegated to team
- Listen to team



President



Vice President

or

(Co-Presidents)

Budget for 2011-2013

The LWVNM Budget Committee proposes the following two-year budget for LWVNM. The state board made one adjustment, increasing the amount available for state studies in view of the large number of study proposals that will be brought before the Convention.

The first year's budget is balanced by the use of \$379 of retained earnings (surplus from previous years.) The second year is in surplus, with two caveats:

- As in previous years, it is left to the discretion of the board to determine whether state finances will permit grants to local Leagues to support the production of their 2012 Voters' Guides.
- It is assumed that the League will move in the direction of electronic distribution of its newsletter, *La Palabra*. Therefore, the budget for printing, mailing and postage is reduced by half in the second year of the cycle.

The state board appreciates the hard work of the budget committee, chaired by Terry Quinn with members Bonnie Burn, Rosmarie Frederickson and Adair Waldenberg and input from *ex officio* members Cheryl Haaker and Kathy Campbell.

Silent Auction - Convention 2011

Another rewarding and **FUN** auction will be assembled for your enjoyment. Please bring your auction items to the Holiday Inn Express, 60 Estrada Drive, Los Alamos, before the first session on Saturday morning, May 14. The meeting starts at 8:30 a.m. Bidding will continue through the morning break in the second plenary session on Sunday. Winners will be announced before Convention adjourns, and items can be picked up until 1:00 p.m. Bring some engaging items to pique our interest. The LWVNM thanks you for your assistance.

LWVNM PROPOSED TWO YEAR BUDGET FOR 2011-2013

<u>Category</u>	<u>2011-2012</u>	<u>2012-2013</u>	<u>Category</u>	<u>2011-2012</u>	<u>2012-2013</u>
<u>Expenses</u>			<u>INCOME</u>		
Board Administration			Contributions	500	500
1. Meeting space	100	100	Fund Raising Events/	500	500
2. Meeting travel	275	275			
3. Training	0	0	Local League PMP @\$12 and \$6		
Delegate Expenses			Central New Mexico	2790	2790
1. LWVNM Convention	800	300	Greater Las Cruces	1104	1104
2. LWVNM Council	150	75	Los Alamos	738	738
3. LWVUS Convention	600	1600	Santa Fe	1512	1512
4. LWVUS Council	800	0	Members-at-Large Dues	560	560
Fundraising Expenses			Other Income		
1. Events	0	0	1. Special Events	400	400
2. Mailing	200	0	2. Interest	10	10
Member Services			3. Convention Auction	1000	0
1. MAL Services	0	0	Grants	500	500
2. Newsletter printing	2368	1243	Use of Retained Earnings	379	0
3. Mailing Services	450	250	TOTAL INCOME	9,993	8,614
4. Newsletter Postage	660	335	Net Gain	0	341
5. Newsletter Editor's Exp.	100	105			
6. Membership Development	100	100			
7. MAL PMP	420	420			
Operating Expenses					
1. Office Use	600	600			
2. Office Supplies	20	20			
3. Postage - Bulk Mail Permit	200	200			
4. Postage - Stamps	50	50			
5. Telephone					
Phone cards: Local Leagues	50	50			
LWVNM Phone (Cell)	150	150			
6. Web Site	0	0			
7. Copying	50	50			
8. Insurance	400	400			
9. Miscellaneous	0	0			
Program Expenses					
1. League Day	300	300			
2. Position Support	500	500			
3. State Studies	450	450			
Grants to Local Leagues					
1. Voters Guide Support	0	0			
Voter Services					
1. Advertising	0	500			
2. Voters Service - Other	200	200			
TOTAL EXPENSES	9,993	8,273			

**EDUCATION FUND BUDGET
FOR 2011-2013**

Expenses		
For Voters Key	0	1600
For Revenue Sharing	0	0
Total Expense	0	1600
Income		
Solicitation Letter	1600	0
Total Income	1600	0
Net Gain	1600	(1600)

In and Around Los Alamos

Kathy Campbell, Reporting

The League of Women Voters of Los Alamos is delighted to host this year's state Convention of the League of Women Voters of New Mexico. Since you will be coming so far, consider spending an extra day or two to explore the neighborhood. The Holiday Inn Express will allow you to extend your stay at the same rate they are offering delegates and their families for the Convention.

There are two museums in Los Alamos, both free. The Los Alamos Historical Museum next to Fuller Lodge. It is open Monday through Saturday from 9:30 to 4:30 and on Sunday from 1 to 4 p.m. Learn more about the Jemez Mountains, the Los Alamos Ranch School, and life in Los Alamos during the Manhattan Project.

The Bradbury Science Museum is located at 15th Street and Central Avenue. Learn about the Manhattan Project and watch the short film called The Town That Never Was. In addition, there are exhibits about current research at Los Alamos National Laboratory. Hours are 10 a.m. to 5 p.m. Tuesday through Saturday, and 1 to 5 p.m. on Sundays and Mondays.

Other interesting places to visit while in the area are Bandelier National Monument and the Valles Caldera. Bandelier offers a newly renovated museum as well as self-guided walking tours of the pueblo ruins and cliff dwellings. For the more ambitious, hikes of five to 20+ miles take you into its largely untouched back country. A separate small area, the Tsankawi ruins, provides a scenic hike and scramble of about 1.5 miles, partly on old foot paths worn into the soft tuff.

The mesas and canyons in Los Alamos County are criss-crossed by trails. Near the Holiday Inn Express, a paved trail runs up the south side of the mesa into Los Alamos proper (about 1.7 miles one-way), and an unpaved trail runs up the north side of the mesa, for a round trip of about 4 miles. The scenic top of the Camp Hamilton trail, built into the edge of the mesa, starts about ½ mile east of the Inn.

Websites for more information:

Bradbury Science Museum <http://www.lanl.gov/museum/>

Los Alamos Historical Museum <http://www.losalamoshistory.org/>

Bandelier National Monument <http://www.nps.gov/band/>

Valles Caldera National Park <http://www.vallescaldera.gov/comevisit/>

LA Country trails <http://www.losalamosnm.gov/parks/trails/>



REMEMBER

To bring this issue of
La Palabra
with you to Convention



SILENT AUCTION

(Details see p. 12)

LWVNM 2011 CONVENTION - May 13-15, 2011, Los Alamos, NM
Holiday Inn Express, 60 Entrada Dr., Los Alamos, Tel: (505) 661-2646

Directions to the hotel: The Holiday Inn Express is just off Route 402 at the entrance to Los Alamos from the east. Route 502 climbs to the altitude of Los Alamos (7,300 feet) from the Rio Grande. At the top of the hill, about 0.2 miles beyond the county line, look for the turnoff to Entrada and the sign for the Holiday Inn Express on your right. After you turn right, Entrada Drive is the first left.

Room Reservations: The Holiday Inn Express is reserving a block of rooms for delegates at the "government rate" of \$86/night + tax, one king-size bed or two double beds per room. Call the Inn at (505) 661-2646 to make reservations, mentioning the League.

Convention Registration: The registration fee of \$40 (\$45 after May 1) includes Friday's reception, convention packet, Saturday lunch, snacks at breaks and Saturday afternoon tour of Los Alamos. The banquet is not included. Guest who do not wish to register as observers may sign up for the Saturday lunch and/or tour as well as the banquet.

REGISTRATION FORM

Name _____ Phone _____

Address _____ Email _____

City _____ State _____ Zip _____

Local League Delegate _____ State Board _____ MAL Rep; _____ Observer _____
 (Only One Allowed)

Registration Fee	Postmark by May 1	\$40	\$ _____
	After May 1	\$45	\$ _____
	Saturday Banquet	\$38	\$ _____

Guests:

_____	Number of guests for banquet	\$38 each	\$ _____
_____	Number of guest for tour	\$10 each	\$ _____
_____	Number of guest for Sat. Lunch	\$12 each	\$ _____

TOTAL ENCLOSED (check made payable to LWVLA) \$ _____

Choice of Entrees for banquet:

Lamb	_____ (number)
Salmon	_____
Vegetarian lasagna	_____

Mail registration form with check payable to LWV Los Alamos to:
 LWVLA (att.convention committee)
 P.O. Box 158
 Los Alamos, NM 87544

Contact: Kathy Campbell, (505) 662-3913, email: president@lwvnm.org

Non-Profit
Organization
U.S. Postage
PAID
Albuquerque, NM
Permit No. 1442

LEAGUE OF WOMEN VOTERS
OF NEW MEXICO
2403 SAN MATEO NE W16C
ALBUQUERQUE NM 87110



VOL. 58 No. 4 Spring 2011

INSIDE THIS ISSUE

Call to Convention	1
President's Message	2
Local News - Presidents	3-4
Reports to Convention	
LWVUS Liaison - Hill	5
Board Highlights	5
Legislative Session	5-6
Natural Resources	6
Treasurer's Report	7
Membership	8
Voters Key	8
2011 Convention Business	
Proposed Program	9-10
Proposed Concurrent	10
Nominating Committee Report	11-12
Silent Auction Information	12
Proposed 2-Year Budget	12-13
In & Around Los Alamos	14
Convention Registration Form	15

LWVNM BOARD CALENDAR - 2011

- May 13-15** **LWVNM Convention, Los Alamos**
- June 17-20** **LWVUS Council - Washington, D.C..**
National Conference Center (Near Dulles Airport)
18980 Upper Belmont Place
Leesburg, VA 20176
Web: www.conferencecenter.com
- Registration: LWVUS at [Council\(at\)lwv.org](mailto:Council(at)lwv.org) or
Call (202) 263-1314 - Natalie Testa